



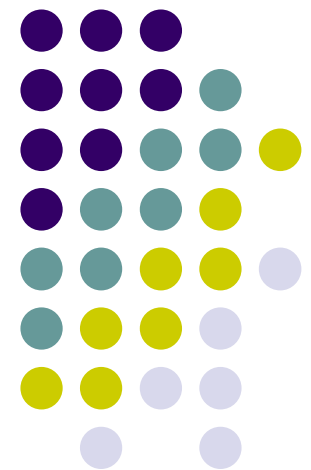
**SUPERINTENDENT'S REPORT – DPAC OCTOBER 5, 2009 – A CONDENSED SUMMARY
OF THE SUPERINTENDENT'S REPORT TO THE BOARD OF EDUCATION, SEPT. 2009**

FINANCIAL CHALLENGES 2009-2010

A) Budget Reminder –

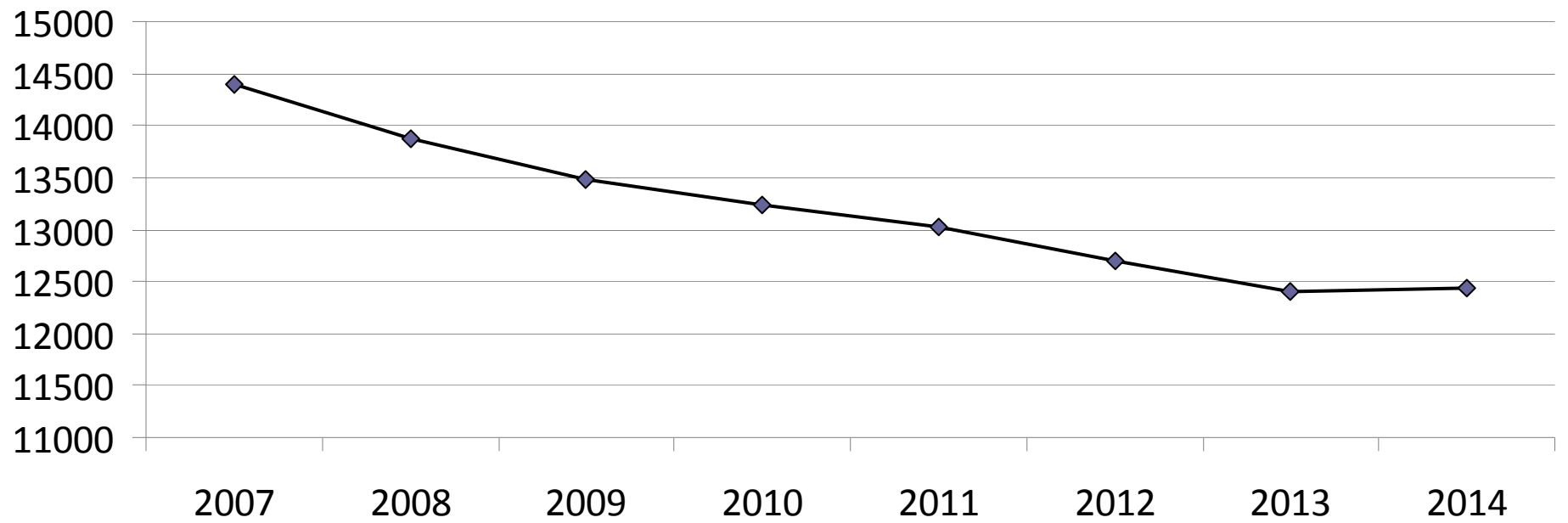
Revisit April 28, 2009 Public Board Meeting

May 2009

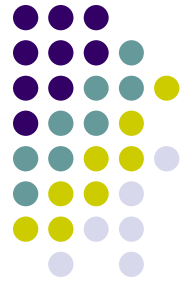




Enrolment Forecast to 2014



Class Size



Grades	Maximum	Class Build Direction	Exceed Maximum	08/09 Average
Kindergarten	22	19	No	17.1
1-3	24	21	No	19.9
4-7	30	27	Consent	25.6
8-12	30	30	Consult	24.3

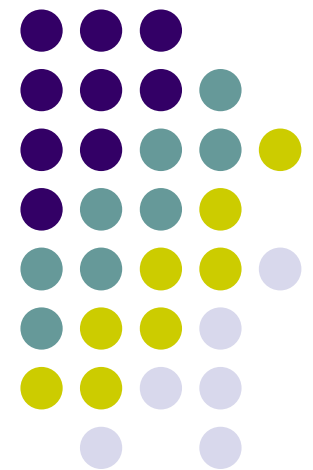
OPTION THREE



Over Three Budget Years		Amount
Expenses Greater Than Revenues 2009-10		<u>\$ 5,561,780</u>
Application of Surplus 2009/10	\$ 3,361,780	
Measures Taken to Balance 2009-10	\$ 2,200,000	<u>\$ 5,561,780</u>
Surplus Carried Forward	\$ 852,180	
Expenses Greater Than Revenues 2010-11		<u>\$ 3,361,780</u>
Measures to Balance 2010-11	\$ 2,400,000	
Application of Surplus	\$ 852,180	
One Time Money (corrected)	\$ 109,600*	<u>\$ 3,361,780</u>
Measure to Balance 2011-12	\$ 961,780	
Total Measures to Balance Taken		\$ 5,561,780

B) So What Has Changed?

June 30, 2009 – September 22,
2009

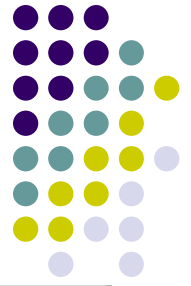




Emerging Issues

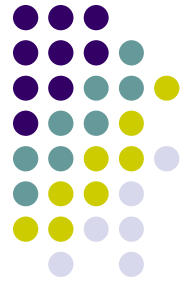
- Annual Facility Grant (AFG)
- *Greenhouse Gas Reductions Target Act*
- Medical Services Premium
- Harmonized Sales Tax
- Full Day Kindergarten
- Enrolment Holdback Recovery
- Consequences of Enrolment Decline

Roll-Up of Additional Financial Issues: Capital and Operating



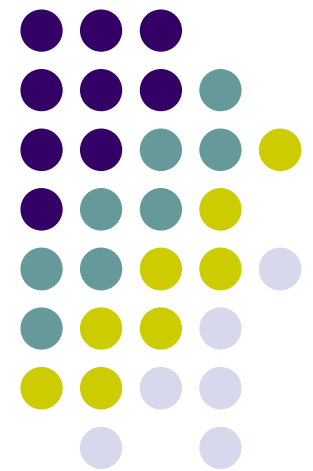
Challenge	\$\$\$
Annual Facility Grant	\$ 4,100,000. (\$2.3 + \$1.8)
Greenhouse Gas Reduction Target	\$ 200,000.
Medical Services Plan	\$ 84,000.
Harmonized Sales Tax	\$ 914,000.
Full Day Kindergarten	\$???
Enrolment Holdback Recovery	\$ 103,000.
Funding Protection Grant	\$ 450,000.
TOTAL	\$ 5,851,000. + Full Day K

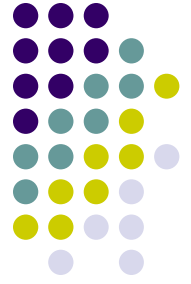
2010-2011 Financial Challenges: Impacts to Operating Budget



Challenge	\$\$\$
Option 3 Year 2	\$ 2,400,000.
AFG	\$ 600,000.
Greenhouse Gas	\$ 200,000.
Medical Services <small>(1/2 year 1+2: \$42 000. + \$84 000.)</small>	\$ 126,000.
HST	\$ 914,000.
Full Day Kindergarten	\$???
Total	\$ 4,240,000.

C) Implications for the Future of School District #57





Implications????

- Apply for deficit in the Annual Facility Grant Fund \$(2,300,000.) for 2009-2010.
- Eliminate AFG projects in 2010-2011.
- Re-size school district staffing to coincide with declining enrolment.
- Eliminate intermediate class size allocation in school organization (\$1,000,000.).
- Initiate school closure process.
- Other options.